



Art Suite "Change Through Time", Artists Robert Harding & Timsam Harding – Photo Asaf Kliger

## CALL FOR PROPOSALS ICEHOTEL 36

### ICEHOTEL - YOUR CANVAS

For the 36<sup>th</sup> year ICEHOTEL will be reborn in a completely new guise, and you can be part of it! This hotel is more than rooms and beds; it is a unique and ephemeral art project made of snow and ice. By tradition, the actual making of ICEHOTEL is organised as an international symposium, whereby the selected creatives gather in Jukkasjärvi to build rooms which are sensorial experiences, original and unique art pieces. At ICEHOTEL we work with premium natural ice from the Torne River, one of the last rivers in Europe untouched by human civilization.

### COMPETITION FORMAT

Right this moment, we're planning ICEHOTEL 36 and we want your ideas! Thoughtful, innovative, creative, beautiful - there are no rules, except it has to be original and it has to be fit to sleep in.

Who's eligible?

ICEHOTEL is about creative exchange, and while any skills you have in sculpting ice or other materials are welcome, we accept applications across all creative disciplines.

The winning designs will be selected based on their creativity, innovation and feasibility, and of course based on the experience given to our visitors and guests.

### Deadline for Submission:

The deadline for submission to ICEHOTEL 36 is **Monday, April 21<sup>st</sup> 2025**.

Further Information: [art@icehotel.com](mailto:art@icehotel.com)



Photo Asaf Kliger

## SITE

Jukkasjärvi is located on the shore of the Torne river, 17 kilometers outside Kiruna. The name comes from a Sámi word that roughly translates to “meeting place by the water”.

With its impressive length of 520 kilometers, the Torne river runs from the ancient mountains in the west down to the coast in the east, where it flows out into the Bay of Bothnia. As the largest of Sweden’s four national rivers it is rare – indeed, unique. One of the last untouched rivers in Europe. A wild river.

It’s the Torne River that provides ICEHOTEL with its ice in winter – and in the summer when the hotel melts, the water returns to its source.

For us the natural beauty and unique story of each individual block of ice provides inspiration that can never be found in artificially frozen ice.

Weather in Jukkasjärvi in November and December can be extremely cold with temperatures reaching below  $-30^{\circ}\text{C}$ .



Art Suite "Ice Kiln", Artists Jaeyual Lee & Daeho Lee – Photo Asaf Kliger

## GENERAL TERMS and CONDITIONS

The artists are solely responsible for the construction of their room during 14 days of practical work on site at ICEHOTEL in Jukkasjärvi. An experienced Support Team will be available for advice in design, construction and general tips, but they will not be available as "extra hands" or "personal assistant" for the artists. The lighting design of each room will be developed through a collaboration between the artists and the Light Team to ensure that construction is feasible.

You can apply as a SOLO artist or as a team of TWO (2).

Winning entrants will be requested to develop construction drawings. Design development will involve input from ICEHOTEL, to ensure that construction is feasible and within the allocated time frame.

ICEHOTEL will provide a "basic-kit" of tools and warm clothes, but artists are encouraged to bring their own equipment to satisfy any special need they might have.

By taking part in this call for proposals entrants authorise ICEHOTEL to make public exhibit and disseminate their proposals.

In connection with the signing of the contract, the selected artist(s) must provide a Company Registration Number/ VAT number, as well as proof of valid liability insurance.

## SELECTION CRITERIA

Your application will be evaluated based on concept and style originality, innovation & level of progressive thinking, visualization & description, feasibility.

**The winning concepts will be announced to the public on Monday, May 5<sup>th</sup> 2025.\***

We are looking forward to your application!

\* Due to the high level of applications, we're unable to respond to each submission. While you may not hear from us this time round, we'll keep your details on file for future opportunities.



Photo Kauppi &amp; Kauppi

## SUBMISSION REQUIREMENTS

Entries must be original and created by the applicant(s) for the purpose of participating in the build of ICEHOTEL 36. Entries must not have been published or made available to the public before the submission date.

Entries shall not infringe any copyrights or any other interests of third parties.

If you would like to submit more than one concept, please note that you need to send separate applications.

ICEHOTEL reserves the right, in its sole discretion, to remove any entry that does not comply with the requirements of the submission.

By taking part in the call for proposals for ICEHOTEL 36 you agree, if you are among the selected artists, that you may be subject to additional terms or a release for being eligible for the last part of the process.

The organisers may cancel, modify, or suspend the call for proposals for ICEHOTEL 36 due to force majeure events, or any other event beyond the organisers' reasonable control.

Personal data are saved, and we will keep all artists of interest on file for any future opportunities.

Your information will be processed in accordance with EU GDPR (General Data Protection Regulation) and you may withdraw consent at any time by writing to [art@icehotel.com](mailto:art@icehotel.com)

## PROJECT OVERSIGHT

The artists are responsible for the design, as well as the physical construction of their room (max 14 days).

The artists chosen to participate in the competition agree to work in collaboration with the Project Manager assigned by ICEHOTEL, and to respect the schedule established by ICEHOTEL.



Art Suite "Antique Myths", Artists Viacheslav Iemelianenko & Bogdan Kutsevych – Photo Asaf Kliger

## APPLICATION FILES

The entries must be sent electronically as one (1) PDF file not exceeding 5 MB, and must be submitted in English or Swedish. Entries shall include the following:

### 1. Design Submission (2 pages, A3 format)

- Page 1, Project Summary
  - text describing the concept and one (1) selected image
- Page 2, Detailed drawings
  - main views or elevations of the room, including dimensions (entrant is free to choose the scale)
  - general explanation of construction, details, lighting ideas and materials (i.e. specify ice/ snow)
  - perspective showing the room in its entirety

### 2. Team Information (max 4 pages, A4 format)

- Name of the project
- Artist(s) information: name, address, nationality, date and place of birth  
e-mail, phone number, website, SoMe handles
- Brief CV and images of selected projects (for new artists only)

Submit your design proposal to [art@icehotel.com](mailto:art@icehotel.com)

The deadline for submission to ICEHOTEL 36 is **Monday, April 21<sup>st</sup> 2025**.

Please ensure that you've enclosed all the above information before submitting.

**Incomplete applications will not be reviewed.**



Art Suite "Yesterday's Tomorrow", Artists Corban Warrington & Daniel Afonso – Photo Asaf Kliger

## ARTIST COMPENSATION and BENEFITS

### Artists' honorarium:

- a one time payment of SEK 37 300, total for a suite with one (1) participant (excl 25% VAT)\*
- a one time payment of SEK 50 900, total for a suite with two (2) participants (excl 25% VAT)\*
- a copyright fee of 1940 SEK/ participant (excl 6 % VAT)\*

### Travel reimbursement:

- up to but not exceeding SEK 4 500/ participant, for Swedish residents
- up to but not exceeding SEK 7 500/ participant, for European residents
- up to but not exceeding SEK 15 000/ participant, for non-European residents

In addition, Icehotel will cover accommodation (shared) and full board during your stay in Jukkasjärvi.

\* Artists will work as free-lance and must be able to provide invoice in order to be payed (i.e. artists will not be employed by Icehotel)

\*\* When signing the contract, the selected artist(s) must provide a Company Registration Number/ VAT number, as well as proof of valid liability insurance

## SCHEDULE

**Monday, April 21<sup>st</sup> 2025**

**Monday, May 5<sup>th</sup> 2025**

Monday, May 12<sup>th</sup> 2025

Monday, June 30<sup>th</sup> 2025

Jul. – Oct. 2025

**Nov. 25<sup>th</sup> – Dec. 10<sup>th</sup> 2025**

**Friday, December 12<sup>th</sup> 2025**

**Deadline for submissions**

**Winners Announcement**

Contract Due

Production drawings and order list Due

Production period

**Construction Period**

**Official Opening ICEHOTEL 36**

Icehotel reserves the right to change the above schedule



Photo Luca Roncoroni

## LIST OF RESOURCES

Please visit [www.icehotel.com/call-proposal](http://www.icehotel.com/call-proposal) to download the digital drawings of the room.

See previous projects at [www.icehotel.com/art-design-gallery](http://www.icehotel.com/art-design-gallery)

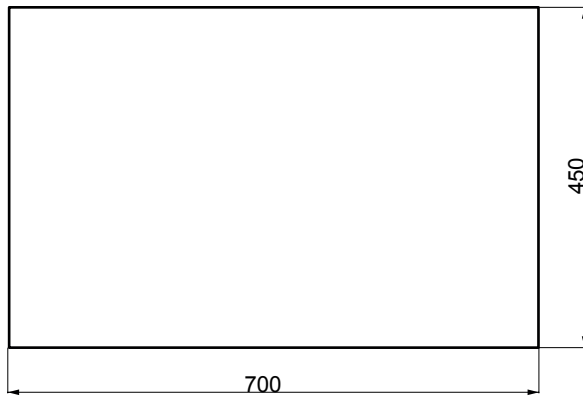
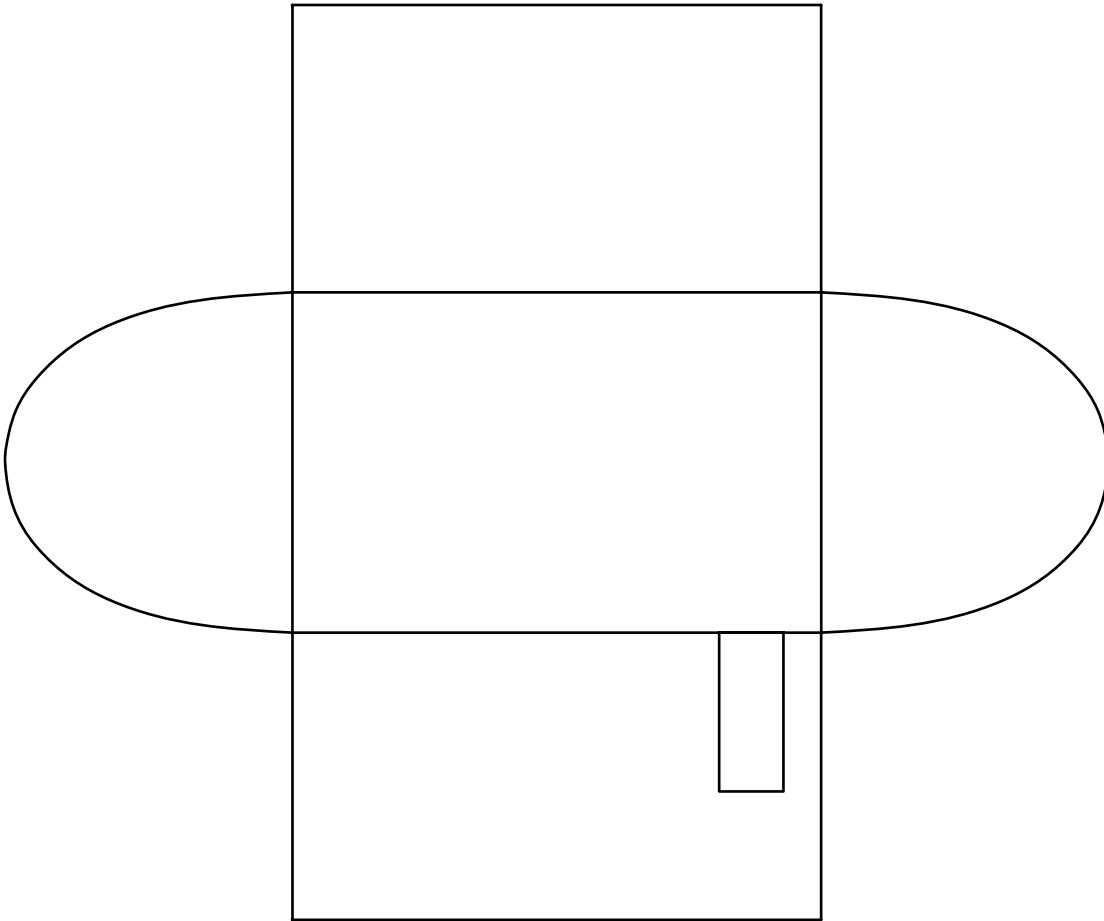
Questions?

Please send an e-mail to [art@icehotel.com](mailto:art@icehotel.com)

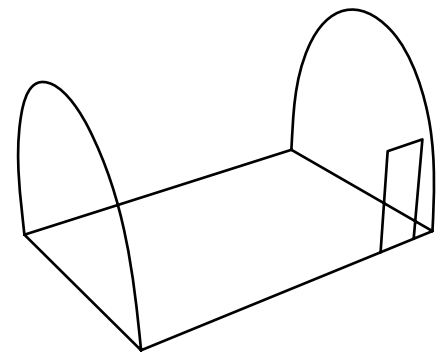
Further info about Icehotel at [www.icehotel.com](http://www.icehotel.com)

## BASIC INFO REGARDING ART SUITES FOR ICEHOTEL 36

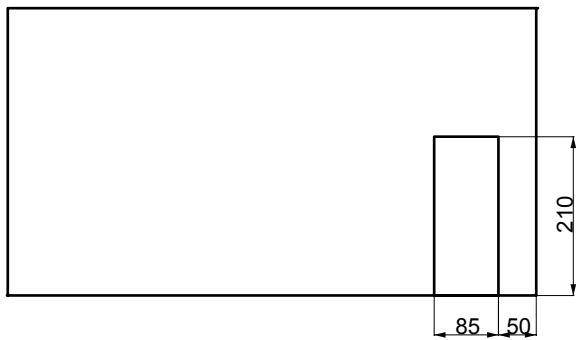
- The room-dimensions are **700 x 450 x 380 cm** (LxWxH)
- Be aware of the fact that ICEHOTEL is made entirely of snow and ice, and that the construction is constantly moving (i.e. roof and walls are sinking and deforming)
- Each room must contain one double bed that measures 160 x 200 cm
- Some of the rooms will have triple beds (240 x 200 cm), and the rooms are bigger, with dimensions **800-850 x 450 x 380 cm** (LxWxH).  
ICEHOTEL will decide which of the winning concepts is more suitable for those rooms
- The bed must be approximately 50 cm high
- Keep a clear space around the bed, approx 70 cm, for easy access and maintenance
- The bed should preferably be placed out of sight from the entrance
- You can work with both ice and "snice" (i.e. hard snow)
- For safety reasons, no ice should be used as material on the floor (i.e. only snow on the floor)
- No other materials are allowed
- ICEHOTEL's lighting team will install lights to illuminate your design and artwork



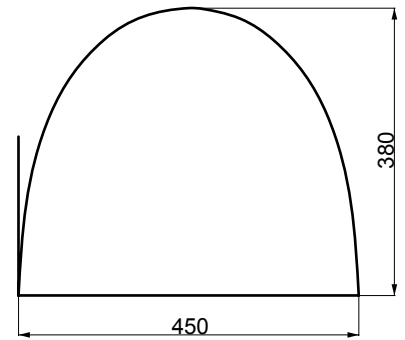
PLAN



PERSPECTIVE



ELEVATION



ELEVATION

**SCALE 1:100**  
ROOM'S DRAWINGS