



Ceremony Hall "Echo", Artists Mathieu Brison & Luc Voisin – Photo Asaf Kliger

CALL FOR PROPOSALS ICEHOTEL 37

ICEHOTEL - YOUR CANVAS

For the 37th year ICEHOTEL will be reborn in a completely new guise, and you can be part of it! This hotel is more than rooms and beds; it is a unique and ephemeral art project made of snow and ice. By tradition, the actual making of ICEHOTEL is organised as an international symposium, whereby the selected creatives gather in Jukkasjärvi to build rooms which are sensorial experiences, original and unique art pieces. At ICEHOTEL we work with premium natural ice from the Torne River, one of the last rivers in Europe untouched by human civilization.

COMPETITION FORMAT

Right this moment, we're planning ICEHOTEL 37 and we want your ideas! Thoughtful, innovative, creative, beautiful - there are no rules, except it has to be original and it has to be fit to sleep in.

Who's eligible?

ICEHOTEL is about creative exchange, and while any skills you have in sculpting ice or other materials are welcome, we accept applications across all creative disciplines.

The winning designs will be selected based on their creativity, innovation and feasibility, and of course based on the experience given to our visitors and guests.

Deadline for Submission:

The deadline for submission to ICEHOTEL 37 is **Saturday, April 11th 2026**.

Further Information: art@icehotel.com



Photo Asaf Kliger

SITE

Jukkasjärvi is located on the shore of the Torne river, 17 kilometers outside Kiruna. The name comes from a Sámi word that roughly translates to “meeting place by the water”.

With its impressive length of 520 kilometers, the Torne river runs from the ancient mountains in the west down to the coast in the east, where it flows out into the Bay of Bothnia. As the largest of Sweden’s four national rivers it is rare – indeed, unique. One of the last untouched rivers in Europe. A wild river.

It’s the Torne River that provides ICEHOTEL with its ice in winter – and in the summer when the hotel melts, the water returns to its source.

For us the natural beauty and unique story of each individual block of ice provides inspiration that can never be found in artificially frozen ice.

Weather in Jukkasjärvi in November and December can be extremely cold with temperatures reaching below -30° C.



Art Suite "Ice as mirror", Artists Pieke Bergmans & Peer de Wit – Photo Asaf Kliger

GENERAL TERMS and CONDITIONS

The artists are solely responsible for the construction of their room during 14 days of practical work on site at ICEHOTEL in Jukkasjärvi. An experienced Support Team will be available for advice in design, construction and general tips, but they will not be available as “extra hands” or “personal assistant” for the artists. The lighting design of each room will be developed through a collaboration between the artists and the Light Team to ensure that construction is feasible.

You can apply as a SOLO artist or as a team of TWO (2).

Winning entrants will be requested to develop construction drawings. Design development will involve input from ICEHOTEL, to ensure that construction is feasible and within the allocated time frame.

ICEHOTEL will provide a “basic-kit” of tools and warm clothes, but artists are encouraged to bring their own equipment to satisfy any special need they might have.

By taking part in this call for proposals entrants authorise ICEHOTEL to make public exhibit and disseminate their proposals.

In connection with the signing of the contract, the selected artist(s) must provide a Company Registration Number/ VAT number, as well as proof of valid liability insurance.

SELECTION CRITERIA

Your application will be evaluated based on concept and style originality, innovation & level of progressive thinking, visualization & description, feasibility.

The winning concepts will be announced to the public on Monday, May 11th 2026.*

We are looking forward to your application!

* Due to the high level of applications, we're unable to respond to each submission. While you may not hear from us this time round, we'll keep your details on file for future opportunities.



Photo Kauppi & Kauppi

SUBMISSION REQUIREMENTS

Entries must be original and created by the applicant(s) for the purpose of participating in the build of ICEHOTEL 36. Entries must not have been published or made available to the public before the submission date.

Entries shall not infringe any copyrights or any other interests of third parties.

If you would like to submit more than one concept, please note that you need to send separate applications.

ICEHOTEL reserves the right, in its sole discretion, to remove any entry that does not comply with the requirements of the submission.

By taking part in the call for proposals for ICEHOTEL 37 you agree, if you are among the selected artists, that you may be subject to additional terms or a release for being eligible for the last part of the process.

The organisers may cancel, modify, or suspend the call for proposals for ICEHOTEL 37 due to force majeure events, or any other event beyond the organisers' reasonable control.

Personal data are saved, and we will keep all artists of interest on file for any future opportunities.

Your information will be processed in accordance with EU GDPR (General Data Protection Regulation) and you may withdraw consent at any time by writing to art@icehotel.com

PROJECT OVERSIGHT

The artists are responsible for the design, as well as the physical construction of their room (max 14 days).

The artists chosen to participate in the competition agree to work in collaboration with the Project Manager assigned by ICEHOTEL, and to respect the schedule established by ICEHOTEL.



Art Suite "Arctic Archive", Artists Kristina Möckel & Sebastian Scheller – Photo Asaf Kliger

APPLICATION FILES

The entries must be sent electronically as one (1) PDF file not exceeding 5 MB, and must be submitted in English or Swedish. Entries shall include the following:

1. Design Submission (2 pages, A3 format)

- Page 1, Project Summary
 - text describing the concept and one (1) selected image
- Page 2, Detailed drawings
 - main views or elevations of the room, including dimensions (entrant is free to choose the scale)
 - general explanation of construction, details, lighting ideas and materials (i.e. specify ice/ snow)
 - perspective showing the room in its entirety

2. Team Information (max 4 pages, A4 format)

- Name of the project
- Artist(s) information: name, address, nationality, date and place of birth
e-mail, phone number, website, SoMe handles
- Brief CV and images of selected and relevant projects, realised in any material (for new artists only)

Submit your design proposal to art@icehotel.com

The deadline for submission to ICEHOTEL 37 is **Saturday, April 11th 2026**.

Please ensure that you've enclosed all the above information before submitting.

Incomplete applications will not be reviewed.



Art Suite "Dragon of Icehotel", Artists Gao Hongyu & Guo Baiwei – Photo Asaf Kliger

ARTIST COMPENSATION and BENEFITS

Artists' honorarium:

- a one time payment of SEK 38 400, total for a suite with one (1) participant (excl 25% VAT)*
- a one time payment of SEK 52 400, total for a suite with two (2) participants (excl 25% VAT)*
- a copyright fee of 2 000 SEK/ participant (excl 6 % VAT)*

Travel reimbursement:

- up to but not exceeding SEK 6 000/ participant, for Swedish residents
- up to but not exceeding SEK 8 000/ participant, for European residents
- up to but not exceeding SEK 18 000/ participant, for non-European residents

In addition, Icehotel will cover accommodation (shared) and full board during your stay in Jukkasjärvi.

* Artists will work as free-lance and must be able to provide invoice in order to be payed (i.e. artists will not be employed by Icehotel)

** When signing the contract, the selected artist(s) must provide a Company Registration Number/ VAT number, as well as proof of valid liability insurance

SCHEDULE

Saturday, April 11th 2026

Monday, May 11th 2026

Friday, May 22nd 2026

Friday, June 26th 2026

Jul. – Oct. 2026

Nov. 24th – Dec. 9th 2026

Friday, December 11^h 2026

Deadline for submissions

Winners Announcement

Contract Due

Production drawings and ice order list Due

Production period

Construction Period

Official Opening ICEHOTEL 37

Icehotel reserves the right to change the above schedule



Photo Luca Roncoroni

LIST OF RESOURCES

Please visit <https://www.icehotel.com/call-proposal-artist-application> to download the digital drawings of the room.

See previous projects at <https://www.icehotel.com/art-design-gallery>

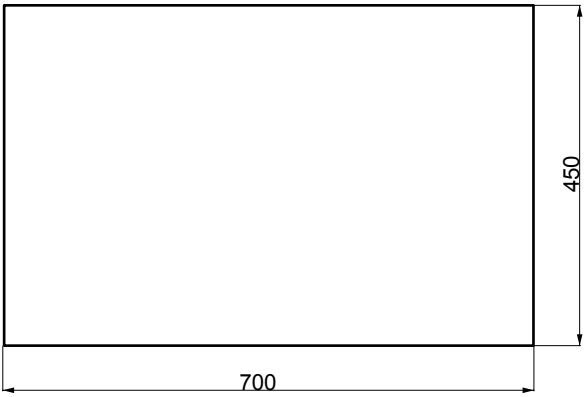
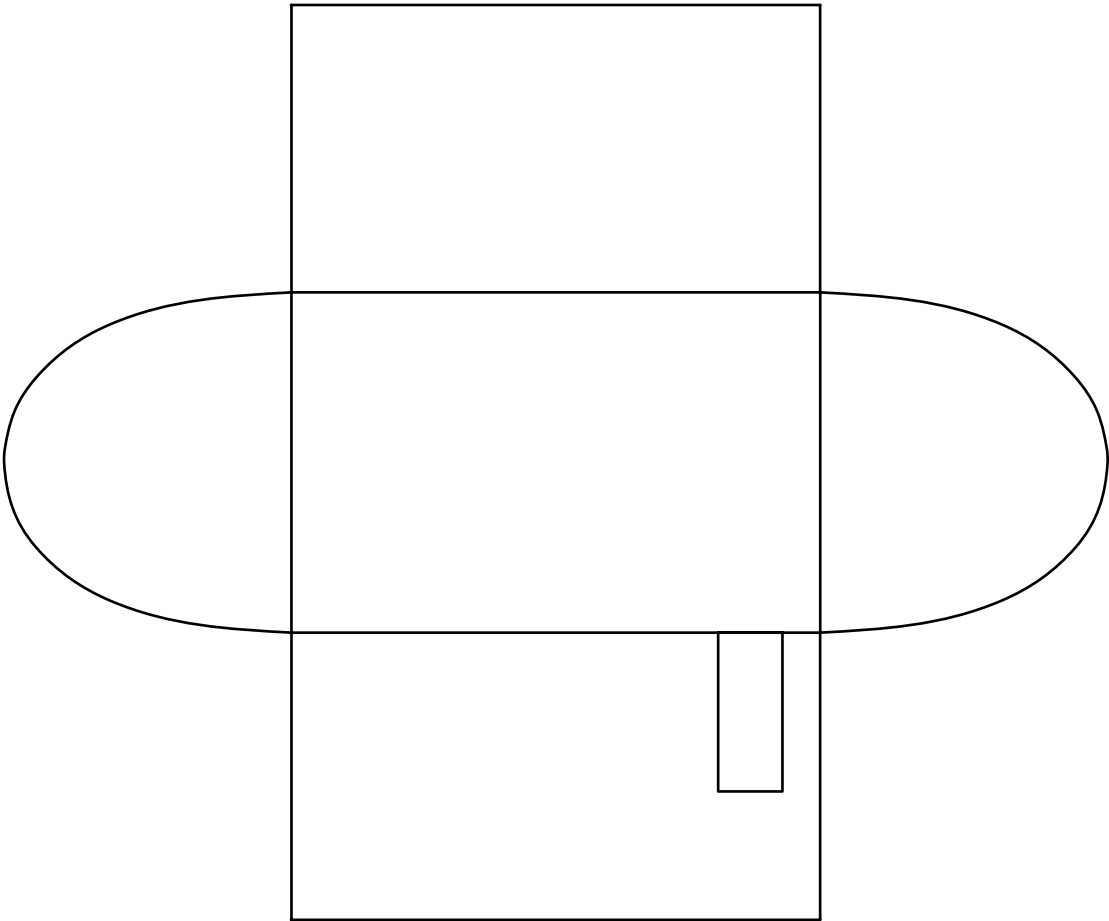
Questions?

Please send an e-mail to art@icehotel.com

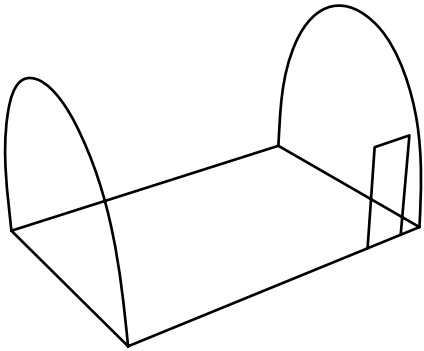
Further info about Icehotel at www.icehotel.com

BASIC INFO REGARDING ART SUITES FOR ICEHOTEL 37

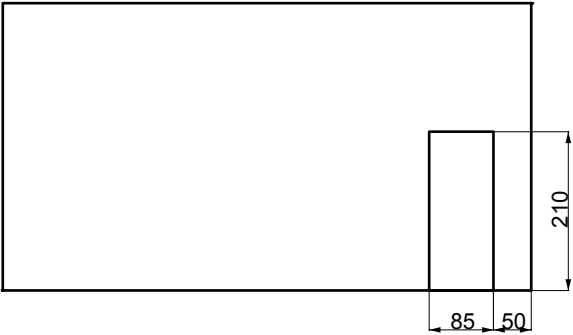
- The room-dimensions are **700 x 450 x 380 cm** (LxWxH)
- Be aware of the fact that ICEHOTEL is made entirely of snow and ice, and that the construction is constantly moving (i.e. roof and walls are sinking and deforming)
- Each room must contain one double bed (mattress measures 160 x 200 cm, ice frame excluded)
- Some of the rooms will have triple beds (240 x 200 cm, ice frame excluded), and the rooms are bigger, with dimensions **800-850 x 450 x 380 cm** (LxWxH).
- ICEHOTEL will decide which of the winning concepts is more suitable for those rooms
- The bed must be approximately 50 cm high
- Keep a clear space around the bed, approx 70 cm, for easy access and maintenance
- The bed should preferably be placed out of sight from the entrance
- For the bed frame ice is advisable, but also "snice" (i.e. hard snow) may be used upon approval
- For safety reasons, no ice should be used as material on the floor (i.e. only snow on the floor)
- No other materials are allowed
- ICEHOTEL's lighting team will install lights to illuminate your design and artwork
- A sound system may also be installed, upon discussion and approval



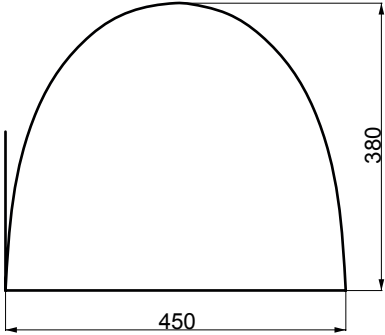
PLAN



PERSPECTIVE



ELEVATION



ELEVATION

SCALE 1:100
ROOM'S DRAWINGS